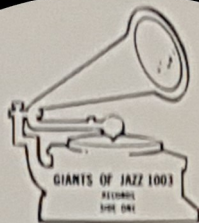


*An Evening  
With  
The Duke*



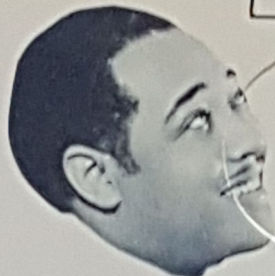
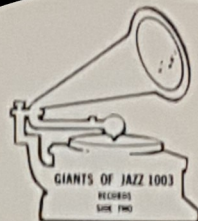
*Philharmonic Auditorium  
Los Angeles  
January 17, 1945*



1. **Blutopia 4:04**  
(Duke Ellington)
2. **Air Conditioned Jungle 3:43**  
(Ellington/Hamilton)
3. **Frustration 3:42**  
(Duke Ellington)
4. **Blue Cellophane 2:54**  
(Duke Ellington)
5. **Suddenly It Jumped 2:49**  
(Duke Ellington)
6. **Coloratura 2:45**  
(Duke Ellington)

© 1977 Giants of Jazz Productions  
Hollywood, Calif., U.S.A. 90028

**GOJ-1003-A**



1. **It Don't Mean A Thing 4:52**  
(Ellington/Mills)
2. **Frantic Fantasy 4:36**  
(Ellington/Stewart)
3. **I Can't Believe That You're  
In Love With Me 5:30**  
(Gaskill/McHugh)
4. **Frankie And Johnny 8:45**  
(Traditional)

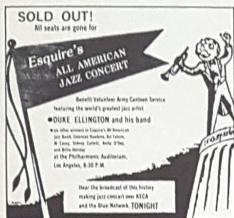
© 1977 Giants of Jazz Productions  
Hollywood, Calif., U.S.A. 90028

**GOJ-1003-B**

**LIMITED EDITION  
For  
Collectors  
Only**

# Duke Ellington Orchestra

**E O J  
lp-1003**



Ad from Los Angeles Times  
January 17, 1945

During the mid forties, Esquire Magazine sponsored a series of All-American Allstar Jazz Concerts to showcase the winners of their annual critics awards. These concerts featured some of the greatest jazz performances of the 40's.

The second in the series of these annual concerts was held at the Philharmonic Auditorium in Los Angeles on January 17, 1945. The featured guest was Duke Ellington, who was the only musician to win a first in two different divisions of Esquire's All-American Jazz Band — as leader of the greatest band and as the best arranger/composer. Five other members of his orchestra also won awards. This album presents a segment of the Ellington portion of the concert, which appears here for the first time on record.

**PERSONNEL**

Rex Stewart, Taft Jordan, Shelton Hemphill, Cat Anderson, Ray Nance, (tp);  
Joe Nanton, Lawrence Brown, Claude Jones (tb);  
Jimmy Hamilton, (cl); Johnny Hodges, (as); Otto Hardwick, (ax); Al Sears, (ts); Harry Carney, (cb);  
Duke Ellington, (p); Fred Guy, (g); Junior Raglin, (b);  
Sonny Greer, (dm)

**SIDE ONE**

Side one opens with Duke Ellington announcing his 1944 composition, **BLUETOPIA**. This dramatic musical portrait was originally written for Paul Whiteman's Contemporary Composers Series, and features fine performances by Rex Stewart (tp), Al Sears (ts), Ray Nance (tp), and Duke Ellington (p). Note the tasty drumming throughout by the underrated Sonny Greer.

Next, Ellington introduces clarinetist Jimmy Hamilton performing **AIR CONDITIONED JUNGLE**, which he co-authored with the Duke.

**SIDE ONE**

1. Blatopia (4:04)
2. Air Conditioned Jungle (3:43)
3. Frustration (3:42)
4. Blue Cellophane (2:54)
5. Suddently It Jumped (2:49)
6. Coloratura (2:40)

**SIDE TWO**

1. I Don't Mean A Thing (4:52)
2. Frantic Fantasy (4:36)
3. I Can't Believe That You're In Love With Me (5:30)
4. Frankie And Johnny (8:45)

After Hamilton, Harry Carney is called to center stage to solo with his rich, mellow baritone sax on the haunting **FRUSTRATION**. It is interesting to note that Ellington did not commercially record this piece until February 1956.

The brilliant Lawrence Brown next solos on **BLUE CELLOPHANE**. He had recently recorded this new Ellington composition for Victor in the label's New York studios before the band came west.

Cat Anderson, known primarily as the high note specialist with the band, provides an excellent solo on his feature, **SUDDENLY IT JUMPED**.

**COLORATURA** is the fourth movement of the lengthy *Performe Suite* and is another feature for the powerful trumpet of Cat Anderson. This is a preview performance because Ellington was not to debut the complete suite until two months later at the 400 Club in New York.

**SIDE TWO**

Side two opens with the 1932 Duke Ellington/Irving Mills jump tune, **IT DON'T MEAN A THING**. This showcases the many talents of the versatile Ray Nance (tp), the swingin' Taft Jordan (tp), the full-toned Joe Nanton (tb), and the melodic and rocking Al Sears (ts).

Rex Stewart returns to the spotlight to perform his **FRANTIC FANTASY**. Ellington never commercially recorded this title, although other live performances of the number have appeared on record.

Anita O'Day, winner of Esquire's new star female vocal award, is called up next to join Duke Ellington and an Allstar quintet comprised of Al Casey (g), Taft Jordan (tp), Jimmy Hamilton (cl), and Sid Catlett (dm). They jam the 1927 Gaskill and McHugh popular song, **I CAN'T BELIEVE THAT YOU'RE IN LOVE WITH ME**. Solos are by Ellington (p), Al Casey (g), Taft Jordan (tp), and Jimmy Hamilton (cl).

Duke Ellington returns to conduct the band through the traditional **FRANKIE AND JOHNNY**, which concludes this portion of the concert. Duke had used this folk piece as a jam vehicle for himself and various members of his band. This version is no exception. Solos are by Duke Ellington (p), Joe Nanton (tb), and Ray Nance (tp). The two duets feature Ellington (p) and Junior Raglin (b).

**AN EVENING WITH THE DUKE** presents a memorable segment of an historic concert, that belongs in the record library of any serious collector of Ellington.

—notes by Dale Booth



Also available on Giants Of Jazz  
GOJ-1001 Billie Holiday  
GOJ-1002 Jazz Giants  
GOJ-1004 Count Basie  
GOJ-1005 Benny Goodman



**in live performances never before on record!**

This record is playable on both Mono or Stereo equipment.

© 1977 GIANTS OF JAZZ PRODUCTIONS, HOLLYWOOD, CALIFORNIA, U.S.A. 90028